

EVEREST TEXTILE

The Ultimate Innovator

*Deep Rooting in Taiwan,
Creating Shared Value for The World!*





Founded in 1988 from Taiwan, Everest is an R&D oriented and vertically integrated textile manufacturer that specializes from yarn texturizing to apparel, Intelligent factories for big data analysis and application.

Everest products are utilized by the best sports, outdoor and high-tech personal protective equipment products leading brands in the world.

About Everest

Everest

Vertically Integrated Textile Company

- Established: 1988
- Employees: 7,155
- IPO: April, 1995 (Taiwan Stock Exchange Symbol 1460)
- Capacity:
Fabrics 15 million yards/month
Garment 1 Millions pcs/month
- Core Product : Fabrics, Sport & Casual Garment
- Capability: Textured yarn, weaving, dyeing, (post-finishing, paper print, digital print, coating/lamination), garment manufacturing.



Dyeing



Texturizing



Coating and Lamination



Weaving/
Knitting



Garment

Global Networks

4 Fabric
Factories

1 Garment
Factory

8 Overseas
Offices



Tainan Factory, Taiwan



Shanghai Factory, China



Ratchaburi Factory, Thailand



North Carolina Factory, USA



Hawassa Factory, Ethiopia



- Headquarters
- Fabric Factory
- Overseas office
- Garment Factory
- Global Apparel Innovative R&D Center



Business Partner (Textile)



DECATHLON

lululemon  athletica



RALPH LAUREN



patagonia



WOOLRICH

M&S



nau



SPR

Black Diamond

DESCENTE

PERRY ELLIS

H&M



PVH



trangoworld

BCBGMAXAZRIA

NorthCape



Timberland

NORDSTROM

MERRELL

asics

PUMA

G-GOLDWIN

sunice



MEC

JCPenney

Schöffel

OXFORD

Lowalpine



OR OUTDOOR



Mountain Sports

DICK'S

Lafuma



L.L.Bean

Bergans

ONELL

NET



Hurley



BANANA REPUBLIC



Calvin Klein



VICTORIA'S SECRET

LANDS'END



MIZZEN+MAIN

PETER HILLAR

saucony

FILA

ellese

EVSP

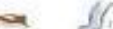
MUSTO

CHAPS



Lee

Liz claiborneinc



ESPRIT



YOUNG

lucy

NAUTICA

OLD NAVY

Eastman

HALTI

TERNUA

RIP CURL



EasyMain

ANN TAYLOR



FLUX

NORRONA



Rohan

GANDER

montbell

VINTERSPORT

ROPER

chico's

COALITION

Mountain Warehouse

eiber

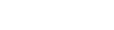
OR

GUESS

Uja

TEJIN

EXEPICO



ARORA

HADLERS

Peak Performance

SPEEDO

Rab



EVA

MEXX



Royal Green



ATHLETA

ALPARDI



Sergio

ZIMBA

GIRO

NAPA

PILLARD

Wilson



KEELA



phenix



BROOKS



EVEREST TEXTILE

Made in Ethiopia

A decorative graphic featuring a white brushstroke that curves across the middle of the page, with several small black and blue dots scattered around it.

**PERSONAL PROTECTIVE
EQUIPMENT PRODUCT**





EVEREST APPAREL ETHIOPIA



Established: 2017
Employees: 3,000 (Apr,2023)
Location: Hawassa Industrial Park
Factory: 3 Buildings (34 、 49 、 50)
Total 33,000 sqm

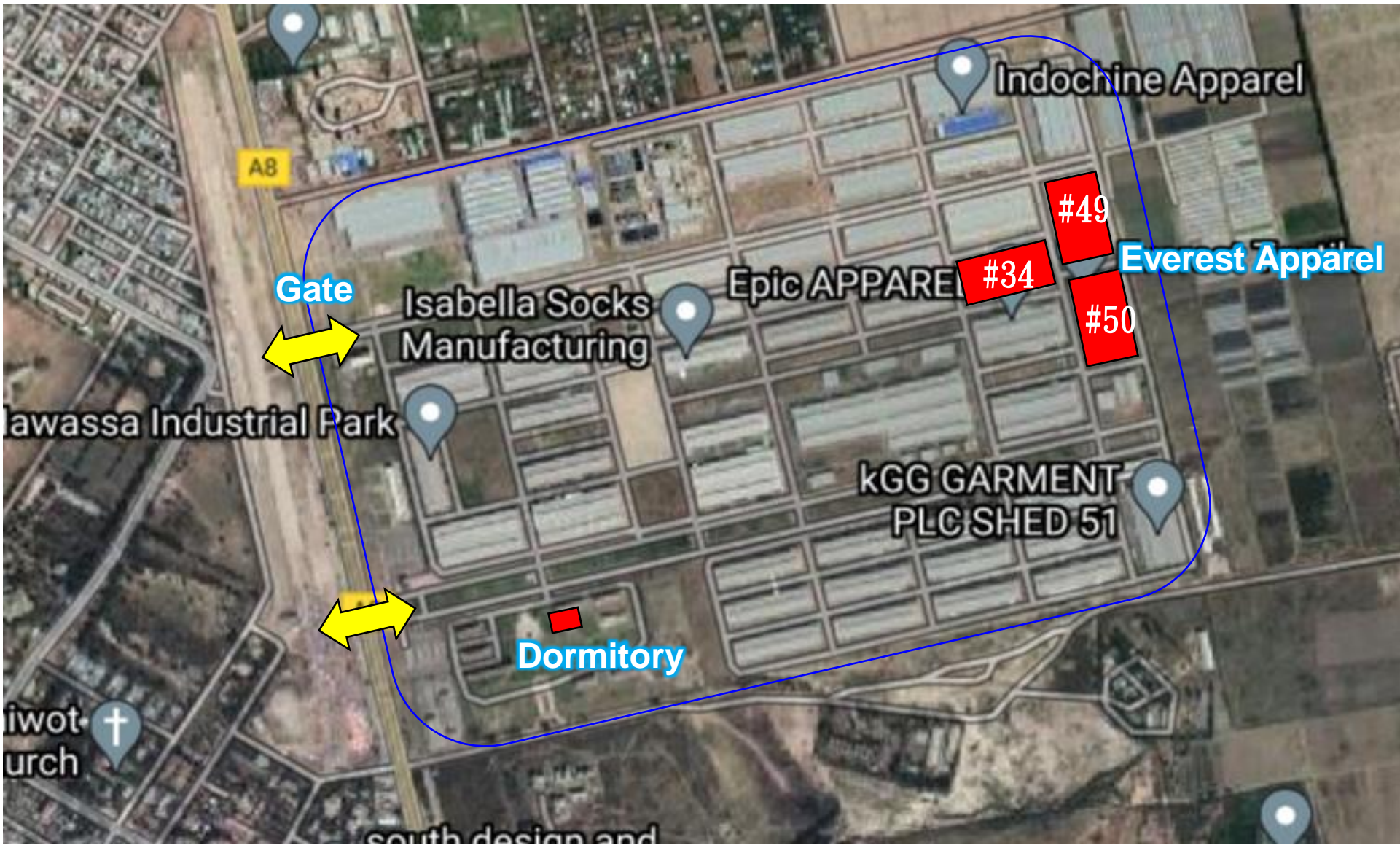


Everest Apparel Ethiopia

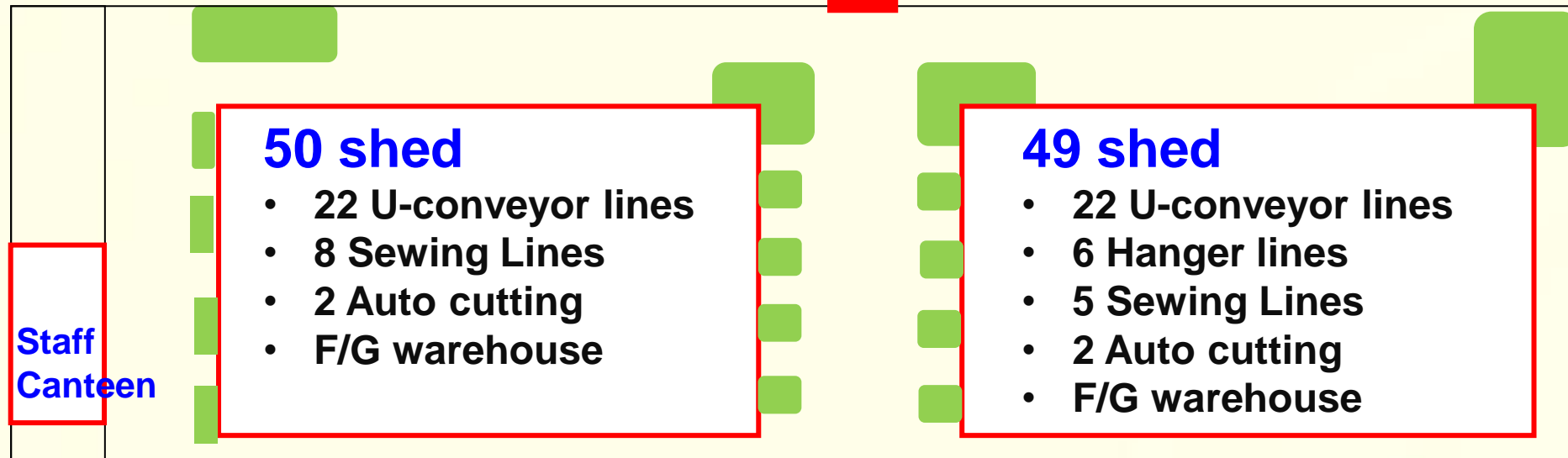
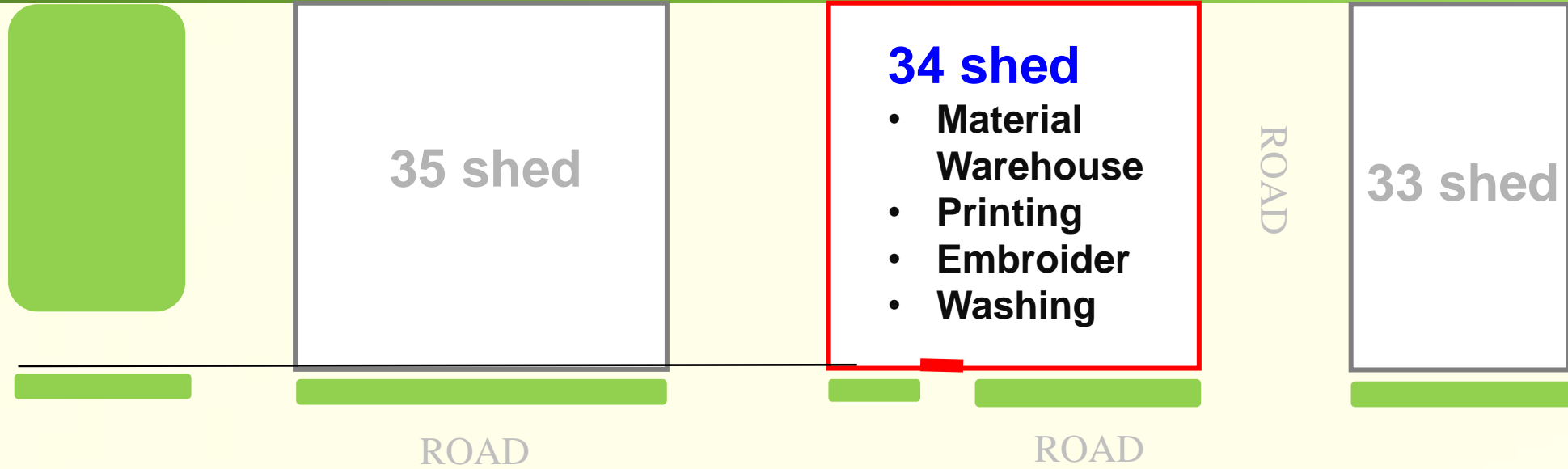
Locate at Hawassa City



Shed Plan in Hawassa Industrial Park



Shed Plan in Hawassa Industrial Park



Business Partner In Ethiopia





Current Main Product 2023

MAJOR MARKET	CUSTOMERS	APPAREL TYPE	PROPORTION
Europe	DECATHLON NEW WEAVE C&B	3 Layer Jacket 、 Tapping Jacket 、 Sport Pant 、	74%
America	NAUTICA SPYDER POLYCONCEPT WALMART C&B 、 CAT	Printing Hooded Coat 、 Sweater 、 Swimsuit 、 Printing Knitted Pants Sport jacket	13%
Africa	MASK PPE Military uniform	3 Layer & 5 Layer Mask 、 Printing Mask 、 Saftysuit Ranger Top 、 Paint 、 raincoat	3%

Capacity

SHED No.	SEWING LINE TYPE	LINE QUANTITY	CAPACITY PCS/DAY/Shift
# 49	U-conveyor	22	25,000
	Hanger	6	5,000
	Normal	9	10,000
# 50	U-conveyor	22	25,000
	Normal	16	15,000
Total		75	80,000



Preparation Machine

MACHINE TYPE	QUANTITY	CAPACITY PCS/DAY
HEAT TRANSFER PRINT 熱轉印	22 SET/PLANT	15,000
SCREEN PRINT (Auto Machine) 自動印花機	2 SETS	20,000
SCREEN PRINT 手印台	3 SETS	9,000
EMBROIDERY 繡花 (Richpeace 1 / Ta-Jima 4)	1 Sets + 4Sets	6,000
Washing & Spin Drying Equipment 水洗烘乾機	4 SETS	6,000
Auto Cutting Machine 自裁機	4 Sets	40,000



In house Printing Facility

- Rubber & Water based printing materials
- On site water treatment cleansing facilities



Screen Print



Digital Print

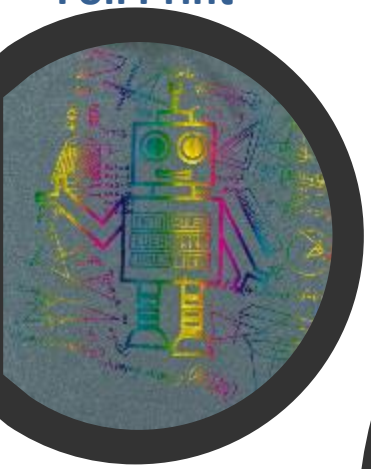


Finished Garment Print



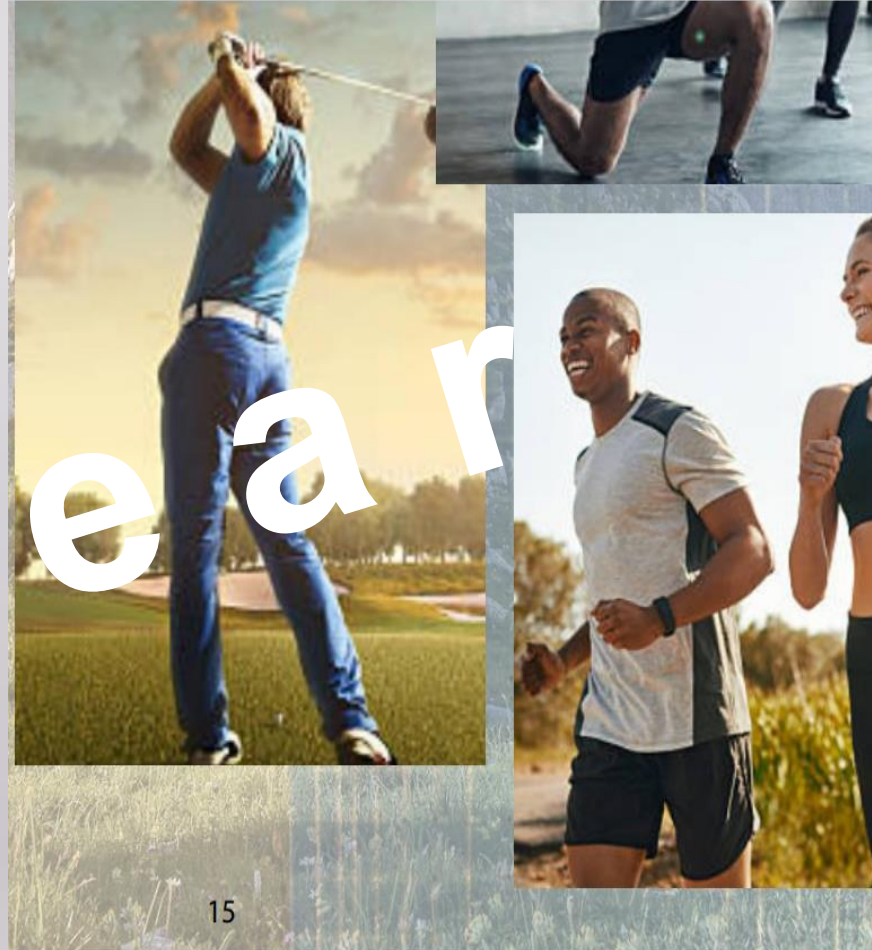
Crack Print

Foil Print



Gradient/Blend/
Fountains Print





Everest Fabric & Garment Possibility
Sport End use

Rain coat

無氟防水透濕

機能 **雨** 風衣



bluesign®
APPROVED

高科技環保機能布料
瑞士「藍色製程標準 bluesign®standard」認證

Stylish



T-Shirt



Yoga



LIFE STYLE



Function x Outdoor



Ever DURA-FILA® (V6-5)

DURA-FILA® is a high tenacity yarn with better heat stability, high tearing and tensile strength with cottony hand feel. Comparing to regular yarn, it shows excellent low temperature resistant (-20°C), higher tenacity(60%↑), good tearing strength(40%↑). Make your outdoor clothing more DURABLE then ever!

Feature:

- Durable W/R
- Abrasion resistance
- 2-4 way stretch
- Pass rain test

Application:

- Outdoor jackets
- Outdoor pants
- Sports wear



EVEREST TEXTILE

16

Ever Bio-membrane X CORDURA® (S062)

This is the evolution of Everest's unique CORDURA® stretch series, making durability and sustainability come together. Providing the same performance level as regular PU lamination. Representing the concern about the only planet we live and treasure.

Feature:

- Water proof
- Breathable
- Abrasion resistance

Application:

- 2-layer jacket
- Snow/Ski gear



EVEREST TEXTILE

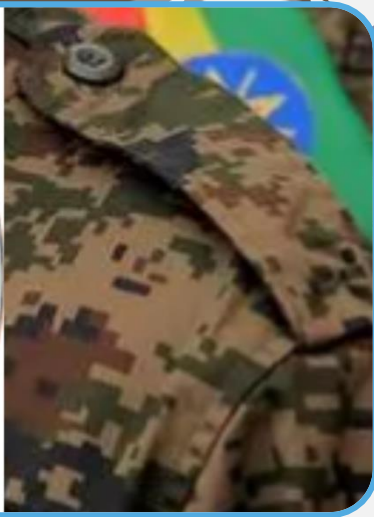


Everest Fabric & Garment Possibility

Outdoor End use

Military & Police uniform OEM

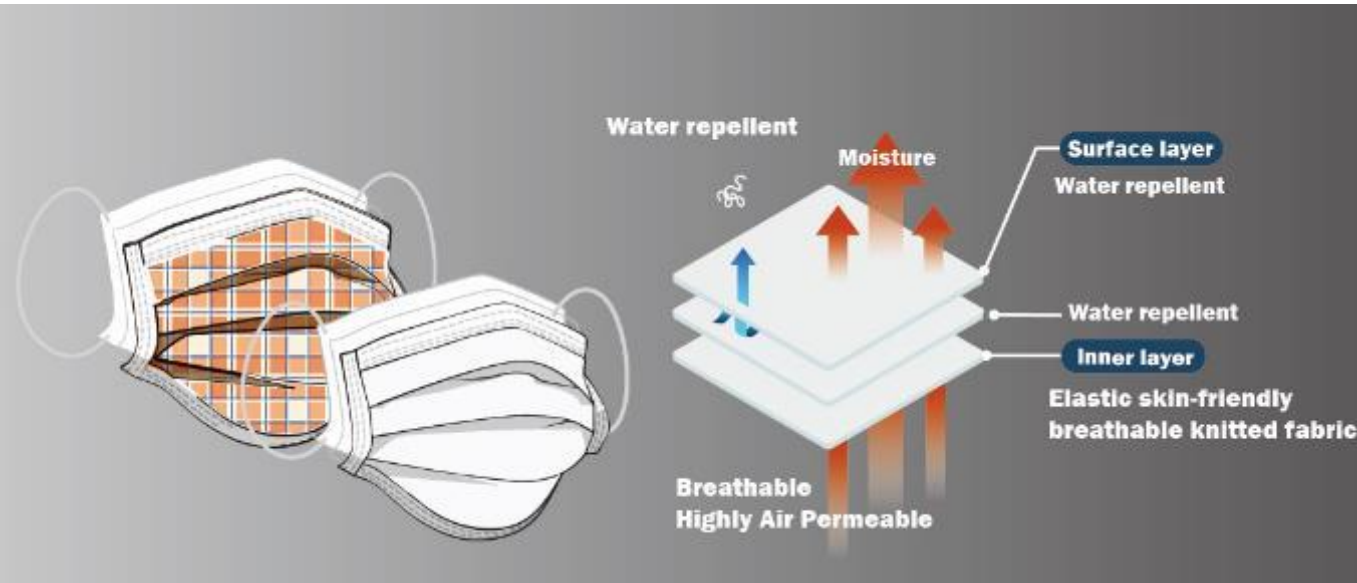
- Raincoat
- Jacket & Pants
- T-Shirt





TEST STANDARD ATSM F2299

Functional Fabric Mask – 3 layer rewashable



- High-tech fabric
- Complete coverage
- Breathable
- Can be reused
- Washable



Life Cycle: 25 times wash

Material: 100% Polyester with Water Repellency

Color: Black, White, and printed

Size: Adult Unisex

Filtration Efficiency: 0.1 um 75%

**EVEREST
TEXTILE**



Nothing is more important than health.

**PROTECTIVE
CLOTHING**



Manufacturer Information

Everest Apparel (Ethiopia) S.C.

Hawassa Industrial park, #34 #49
#50 Shed, Hawassa, Ethiopia

Contact:





Thank you !